

E-Instruments: AQ VOC
PORTABLE HANDHELD VOC MONITOR

Accurate VOC Monitoring & Real-Time Data-Logging for Air Quality Analysis in Industrial Safety, Environmental, Laboratories and other IAQ Applications.

- ✓ Dynamic PID VOC Sensor Technology
 - 0 - 20,000 PPB
 - 0 - 200 PPM
- ✓ VOC in ppb/ppm or $\mu\text{g}/\text{m}^3/\text{mg}/\text{m}^3$
- ✓ UPGRADEABLE: Add UP TO 2 More Gas Sensors
- ✓ Real-time Data Logging for Graphs, Data Review, IAQ reports
- ✓ Active Internal Sampling Pump
- ✓ Large Internal Memory (2000)
- ✓ PC Software & USB Included
- ✓ Li-Ion Rechargeable Battery
- ✓ Barometric Air Pressure
- ✓ Protective Magnetic Rubber Boot
- ✓ Optional Wireless Printer
- ✓ Optional Handheld Probe
- ✓ MADE IN USA

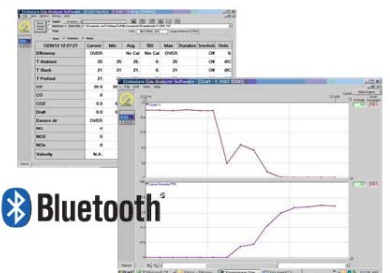


Applications:

VOC	% RH
TEMP	BAROMETRIC PRESSURE
FORMALDEHYDE	CO ₂
O ₂	CO
NO ₂	H ₂ S
SO ₂	NO

Specifications:

Parameter	Sensor	Range	Res.	Accuracy
Low Range VOC OR High Range VOC	PID	0 - 20 ppm (0 - 46 $\mu\text{g}/\text{m}^3$)	1 ppb (2.3 $\mu\text{g}/\text{m}^3$)	10 % rdg. \pm 20 ppb
	PID	0 - 200 ppm (0 - 460 mg/m^3)	10 ppb (23 $\mu\text{g}/\text{m}^3$)	10 % rdg. \pm 50 ppb
Relative Humidity	TFC	5 - 95% RH	0.1% RH	\pm 2% RH
Ambient Temp.	Pt100	-40 - 257°F (-40 - 125°C)	0.1°C/F	\pm 0.4°C (0 - 60°C)
Barometric Pressure	Solid State	260 - 1260 mbar	1 mbar	\pm 2 mbar
Electromagnetic Compatibility	EN 61326-1, Portable Equipment			



AQ Gas® Real-time Datalogging Software

E-Instruments: AQ VOC

PORTABLE HANDHELD VOC MONITOR

AQ VOC Ordering Code:

Part #: VOC - ___ - ___ - ___

Example: Part #: VOC - 1 - F - C2 = Low Range VOC, CH O, CO2

ALL AQ VOC Kits Include:

Temperature, % Relative Humidity
Barometric Pressure
PC Software & USB Cable
REAL-TIME Continuous Datalogging
Bluetooth Connectivity
Protective Carrying Case
Continuous Active Internal Sampling Pump
Operating Manual & Quick Reference Guide
Li-Ion Battery & AC Charger
Factory Calibration Certificate

Optional Accessories:



Wireless Bluetooth™ Printer (EE900P)



Sampling Probe (E85AACSF13)

Select your VOC Range:

Parameter	Sensor	Range
V1 - <u>Low</u> Range VOC	PID	0 - 20 ppm (0 - 46 g/μm ³)
V2 - <u>High</u> Range VOC	PID	0 - 200 ppm (0 - 460 mg/m ³)

Optional Gas Sensor Upgrades (Choose UP To ANY 2):

C2 - Carbon Dioxide (CO₂)*	NDIR	0 - 5,000 ppm	1 ppm	±2% rdg. ± 10 ppm
C - Carbon Monoxide (CO)*	EC**	0 - 200 ppm	0.1 ppm	± 1 ppm rdg. ± 0.2 ppm
F - Formaldehyde (CH₂O) ***	EC**	0 - 10 ppm	1 ppb	2% ± 30 ppb
H - Hydrogen Sulfide (H₂S)*	EC**	0 - 100 ppm	1 ppm	± 4% of rdg. ± 0.5 ppm
N - Nitrogen Dioxide (NO₂)*	EC**	0 - 20 ppm	0.1 ppm	± 0.5 ppm of rdg.
O - Oxygen (O₂)	EC**	0 - 25%	0.1%	± 0.1% vol
S - Sulfur Dioxide (SO₂)*	EC**	0 - 20 ppm	0.1 ppm	± 0.5 ppm of rdg.
X - Nitric Oxide (NO)*	EC**	0 - 250 ppm	0.1 ppm	± 2 ppm of rdg.

* Other Ranges are Available Upon Request

** Electrochemical

*** Accuracy Based on Laboratory Conditions

envco
www.envcoglobal.com

94 Newton Road, Eden Terrace, Auckland 1010, New Zealand

Web: www.envcoglobal.com | Email: info@envcoglobal.com

Phone: NZ 0800 623 336 or +64 (09) 307 3285 | Fax: +64 (09) 307 3287